



Matagorda Ship Channel, TX

U.S. ARMY CORPS OF ENGINEERS

BUILDING STRONG®

FACT SHEET as of February 21, 2012

AUTHORIZATION: House Document 388, 84th Congress, 2nd Session

TYPE OF PROJECT: Navigation

PROJECT PHASE: O&M

CONGRESSIONAL INTEREST: Senators Hutchison and Cornyn (TX), Representative Paul (TX-14)

NON-FEDERAL SPONSOR: Calhoun County Navigation District, Calhoun County, Texas

BACKGROUND: The project consists of a 38' deep X 300' wide entrance channel through a jettied entrance and a 36' draft X 200' wide main channel that extends 25.2 miles and terminates at a 1000' X 1000' wide turning basin at Point Comfort. The navigation project is located in the vicinities of Port O'Connor, Port Lavaca, and Point Comfort in Matagorda and Calhoun Counties, Texas.



STATUS: FY 11 activities included dredging Matagorda Ship Channel Peninsula to Point Comfort to project depth only and perform repairs to the Matagorda jetties.

ISSUES: Dredging to project depth without the advanced maintenance increases project cost and decreases level of service to only three months. Additional funds are needed to dredge advanced maintenance from Gallinipper Point to Point Comfort and create shoaling barriers along placement areas. Critical shoaling in the Entrance Channel and upper reaches of the Matagorda Ship Channel is causing annual draft restrictions. The economic impacts are estimated at \$48M per foot of draft restriction annually, from the loss of bauxite production. The level of service for the upper channel reaches would be extended from 3 months to 12 months by funding both the base work and advanced maintenance portions as one contract.

FINANCIAL SUMMARY (\$):

	<u>O&M</u>
Federal Cost Estimate	N/A
Non-Federal Cost Estimate	N/A
Total Project Cost	N/A
Allocation for FY 2010	\$4,919,000 ^{1/}
ARRA Funding	0
Allocation for FY 2011	5,817,000
Allocation for FY 2012	4,222,000
President Budget FY 2013	4,920,000
Amount That Could Be Used for FY 2013	17,561,000
Balance to Complete	N/A

^{1/} Includes \$566,000 in Supplemental Funding

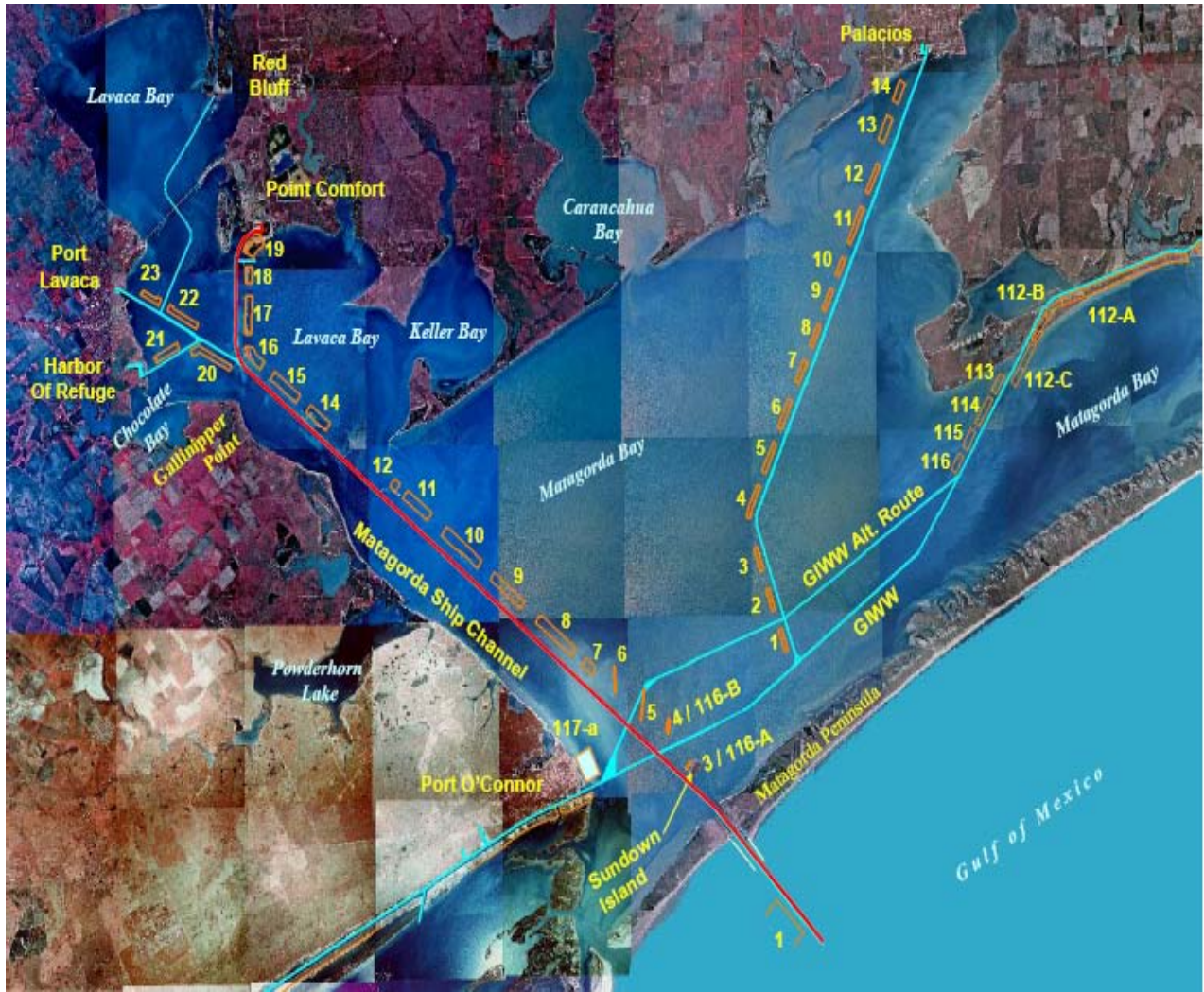
SCHEDULE:

FY 2012 Scheduled Work: FY 2012 activities include dredging the Entrance Channel, the natural bay bottom reach and continuing the Jetty Evaluation Study.

FY 2013 Budget: FY 2013 activities will include dredging the Peninsula to Point Comfort to project depth (\$4,920,000). Additional funding could allow for the dredging of the Peninsula to Point Comfort to advanced maintenance (\$4,254,000), maintenance dredging Point Comfort to Gallinipper to advance maintenance (\$3,174,000), maintenance dredging Channel to Port Lavaca and Harbor of Refuge to advance depth (\$5,213,000) and perform a Jetty Engineering Deficiency Rehab Study (\$5,270,000).

COMPLETION: N/A

For more information regarding the Matagorda Ship Channel, TX project, contact Mr. Pete Perez, P.E., Deputy District Engineer, Chief, Programs and Project Management Division at (409) 766-3018 or Pete.G.Perez@usace.army.mil.



U.S. ARMY CORPS OF ENGINEERS – GALVESTON DISTRICT
www.swg.usace.army.mil